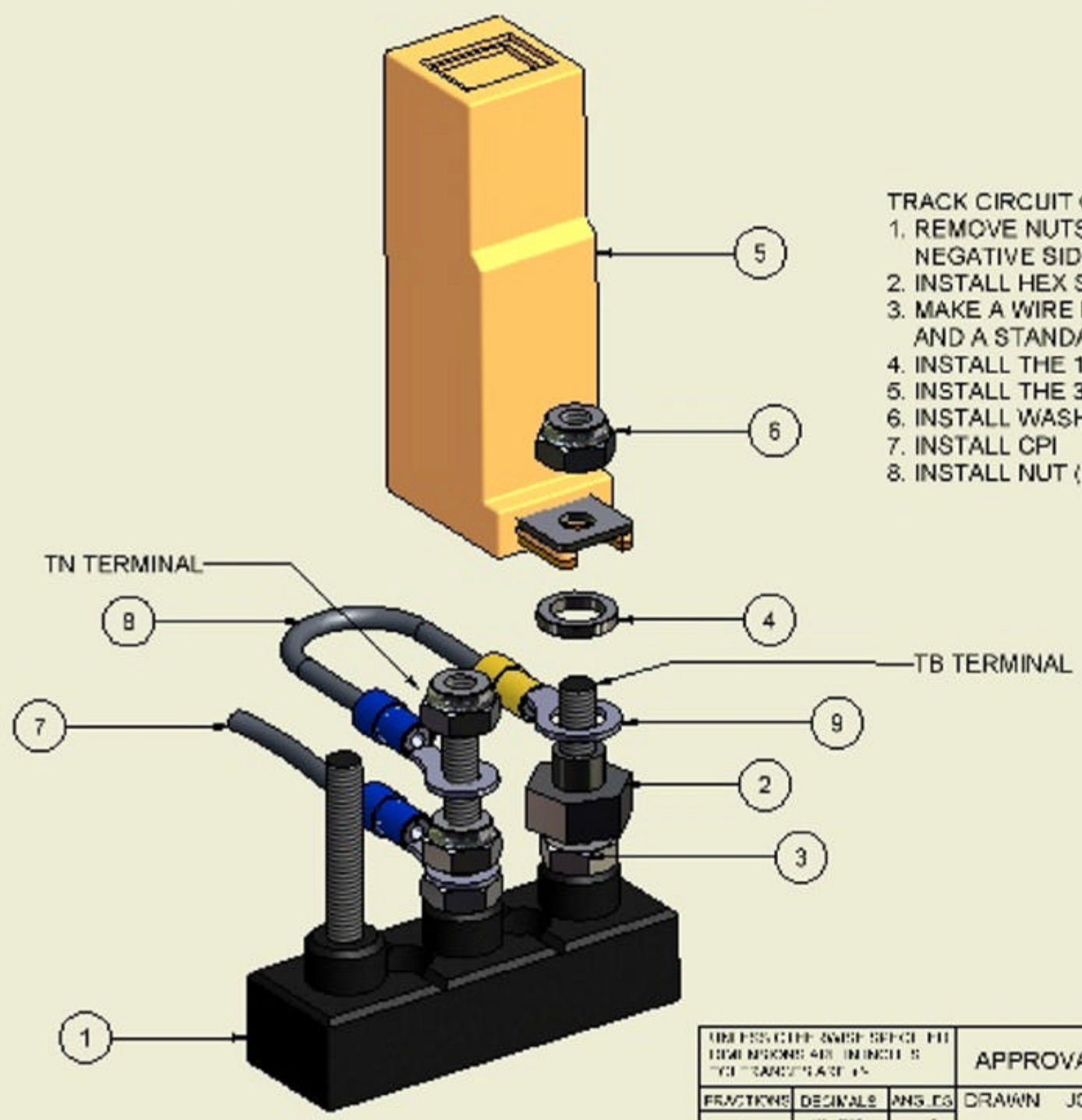


REVISION HISTORY			
REV	DESCRIPTION	DATE	APPROVED
A	SEE ECN# 1431	5/6/2004	JCW

TRACK CIRCUIT CPI INSTALLATION INSTRUCTIONS

1. REMOVE NUTS FROM POSTS FOR BOTH THE POSITIVE AND NEGATIVE SIDE OF THE TRACK CIRCUIT (TB AND TN)
2. INSTALL HEX SHOULDER WASHER (ITEM 2) OVER HEX NUT ON TB TERMINAL
3. MAKE A WIRE LOOP (ITEM 8) BY CRIMPING A 3/8" RING TERMINAL (ITEM 9) AND A STANDARD 1/4" RING TERMINAL ON A SHORT PIECE OF HOUSE WIRE.
4. INSTALL THE 1/4" TERMINAL OF THE LOOP ON THE TN AND REPLACE NUT.
5. INSTALL THE 3/8" RING TERMINAL OVER THE HEX SHOULDER WASHER
6. INSTALL WASHER (ITEM 4) OVER RING TERMINAL
7. INSTALL CPI
8. INSTALL NUT (ITEM 6) AND TIGHTEN SECURELY



Parts List			
ITEM	QTY	PART NUMBER	DESCRIPTION
1	1		AAR TERMINAL BLOCK
2	1	16286-01	HEX SHOULDER WASHER
3	2		HEX NUT
4	1	16289-01	FLAT WASHER
5	1		UTE CPI ASSEMBLY
6	3		NUT
7	1		TRACK WIRE
8	1		WIRE LOOP
9	1	12439-16	RING TERMINAL 3/8"

DIMENSIONS: UNLESS SPECIFIED DIMENSIONS ARE IN INCHES DECIMALS ARE IN THIRDS			APPROVALS DRAWN JCW CHECKED JCW CONTRACT NO	DATE 6/6/04
FRACTIONS 1/16 1/8 1/4 3/8 1/2 3/4 1	DECIMALS .001 .005 .010 .015 .020 .030 .040 .050 .060 .070 .080 .090 .100	ANGLES 15 30 45 60 75 90 105 120 135 150 165 180		

ULTRA-TECH ENTERPRISES, INC.			
TITLE			
TRACK CIRCUIT CPI INSTALLATION			
SIZE B	CODE ID # 025	DWG NO track cpi	REV A
SCALE AS SHOWN		SHEET 1 OF 1	